

Popeze® Winged Angel

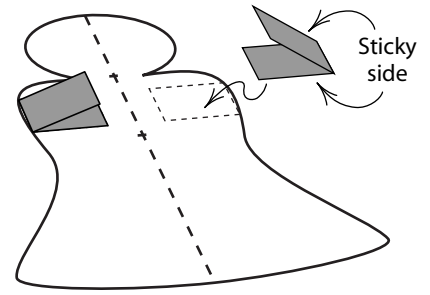
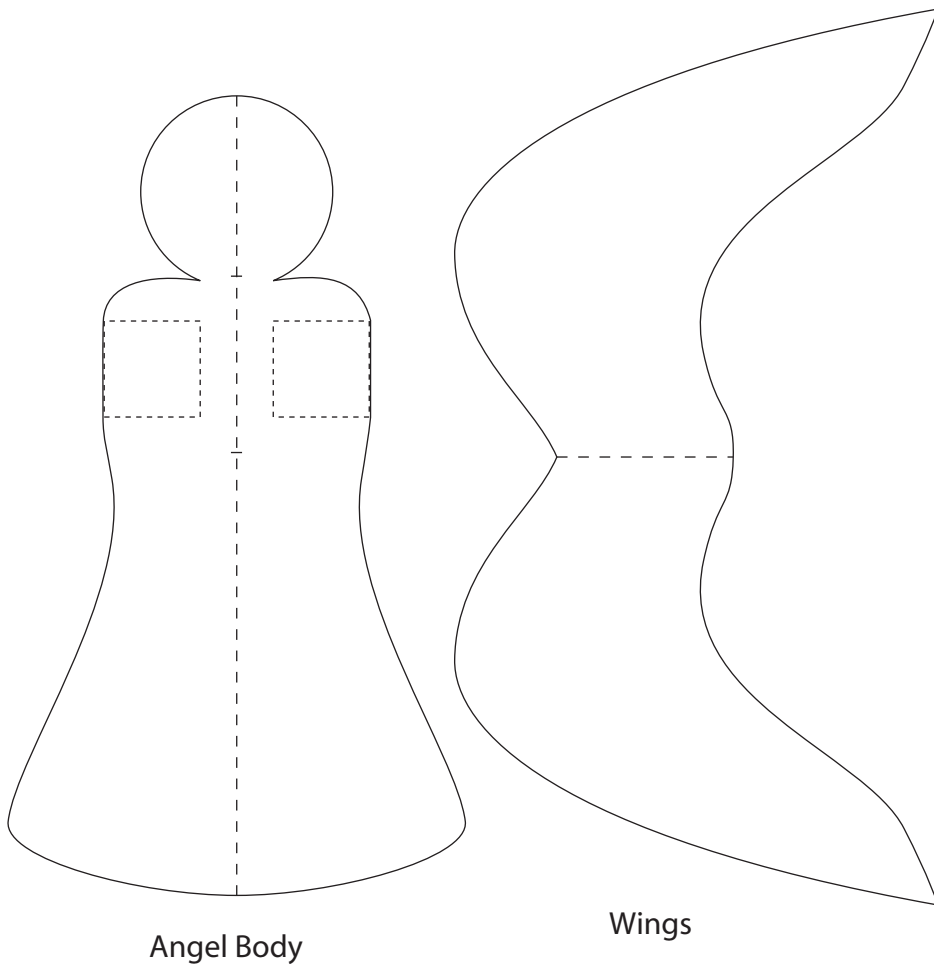


Figure 1

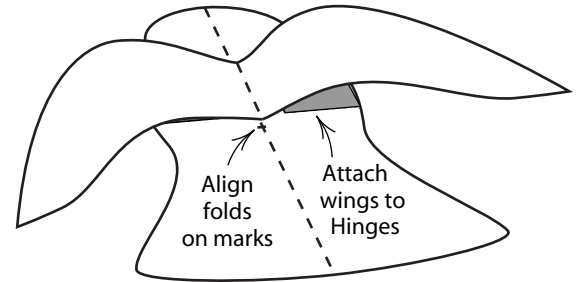


Figure 2

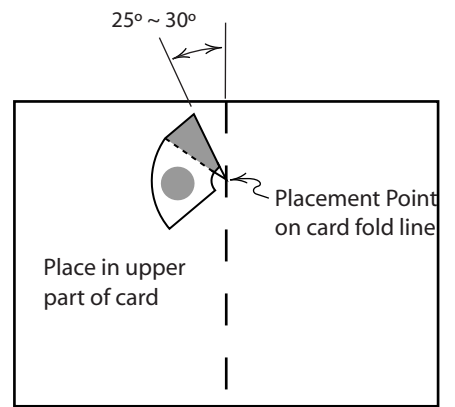


Figure 3

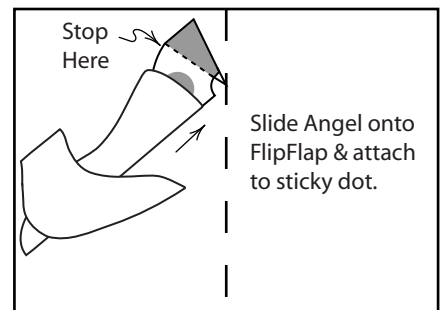


Figure 4



For this project you will need:

- 1 Popeze® FlipFlap
- 2 Popeze® Hinges
- 1 copy of this sheet, printed on card stock.
- 1 Card (A2 size)

- Cut _____
- Fold - - - - -
- Hinge placement ·····

Directions:

Cut out Angel Body and Wings, crease along fold lines. Peel two Popeze® Hinges from from a sheet and place as shown in Figure 1. Attach wings to body as shown in Figure 2. Fold angel in half with wings folding opposite to body. Peel a Popeze® FlipFlap from sheet and fold in half along the center score line. Place FlipFlap on card as shown in Figure 3. Slip folded body with wings on to FlipFlap and attached to the sticky dot as in Figure 4. Close card and press to attach FlipFlap to other side of card. Open card to watch angel pop up. Take care when closing card as wings may need to be tucked in to avoid being bent.